

MEET YANU



Yanu is a fully autonomous robot bartending unit powered by A.I. It serves drinks, handles payments, identifies and communicates with clients.

For additional information on the offer available to acquire Yanu robot for your business **please contact our sales team.**



Sales Team
sales@yanu.ai

Company
Robolab OÜ. Roseni 7a,
Tallinn, Estonia

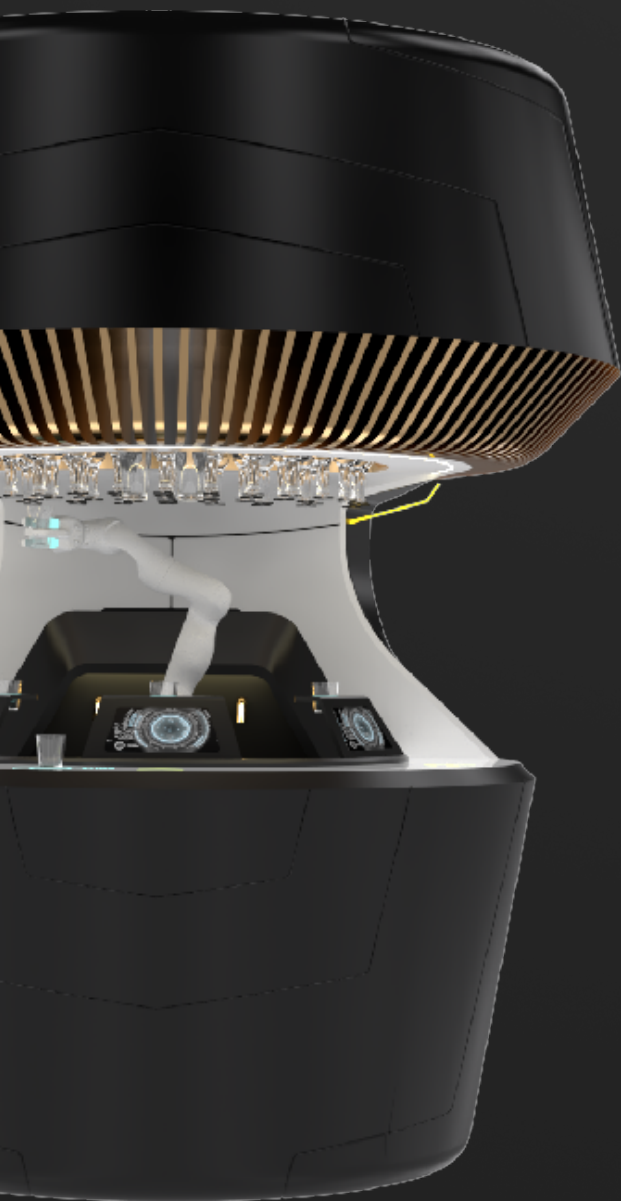


Some of the key features of Yanu

- Swift**
Operates effectively by selling more and faster than human bartenders.
- Efficient**
Precise, low operating costs. Forget labour taxation, theft, sick days.
- Crafty**
An expert cocktail-maker created to freely communicate with humans.
- Safe**
A compact and relocatable device designed to fit into any environment.

- Engagement**
A thrilling concept that draws a bigger audience to Your venue.
- Maintainable**
A cloud-based robot that is easy to operate: monitor, clean, refill.

TECHNICAL INFORMATION



Main Specifications

| | |
|-------------------|--------------------|
| Height: | 2,95 meters |
| Diameter: | 2,45 meters |
| Serving speed: | 60-140 drinks/hour |
| Electric supply: | 220 V |
| Dry weight: | 1500 kg |
| Full load weight: | 1700 kg |

Bar Facts

| | |
|--------------------------------------|----------------------|
| Bottles in one load | 45 |
| Max bottle capacity | 100 mm d x 420 mm h |
| Drinks serving capacity per load | 6 x 300 glasses |
| Ice machine capacity | 40 kg |
| Ice machine production per hour | 4.2 kg/h |
| Number of soft drinks lines | 6 |
| Transportation dimensions | 1 |
| Estimated amount of drinks diversity | 1500 |
| Payment solution | Credit card & tokens |
| Age verification | With credit card |
| Serving docks | 6 |
| Glass stacks | 30 |
| Number of different glasses | Up to 30 |
| Max number of empty glasses | 1050 |
| Type of glass | Dish-washable PC |